

IBM i Services Practical Examples

i-Power Midlands

10 December 2020



Rudi van Helvoirt

rvanhelvoirt@vanhelvoirt.nl



Agenda

Examples (GUI examples)



Afterwards: Please give me some feedback!

The Future.....  am ready

After all I could be wrong 



The message: CPF1393 – User profile &2 has been disabled.

The monitoring: Navigator for i => Monitors => Message Monitors

The left screenshot shows the 'Properties' dialog for a monitor named 'MON_USER'. The 'General' tab is active, showing the monitor name and description 'Monitor Userprofiles for get'. The 'Message Queue to Monitor' is set to 'Qsysopr' and the 'Library' is 'Qsys'.

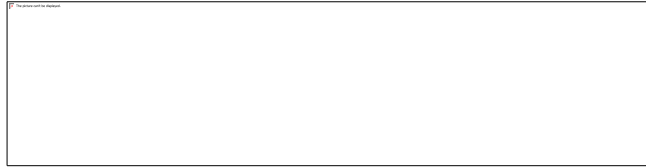
The right screenshot shows the 'Properties' dialog for a message set configuration. It includes a table for 'Message Set 1' with the following data:

Select	Message ID	Type	Severity	Reply With
<input type="checkbox"/>	cpf1393	All	>=0	

Below the table, there are options for 'Excluded Message Set 1' (None) and 'No action' (selected). The 'Trigger at the following message count' is set to 1. The 'IBM i trigger command' field contains the following script:

```
SNDST TYPE(*LMSG)
TOINET(( [REDACTED] PR1)
(support@vanhelvoirt.nl *CC)) DSTD(' &MON')
LONGMSG('Please handle &MSGID on message
queue &TOMSGQ in &TOLIB.:/Pit was sent at &TIME
on &DATE on system.:/N&ENDPOINT.:/Pcheck MSGQ
QSYSOPR to see which Userprofile has been
DISABLED.')
```

The 'Automatically reset after trigger command has run' checkbox is checked. The 'IBM i reset command' field is empty.



The message: CPF1393 – User profile &2 has been disabled.

The monitoring: Navigator for i => Monitors => Message Monitors

```
SNDDST TYPE(*LMSG) TOINTNET((<my_mail_address> *PRI))
DSTD('&MON') LONGMSG('Please handle &MSGID on message
queue &TOMSGQ in &TOLIB.:/PIt was sent at &TIME on &DATE
on system:./N&ENDPOINT.:/PCheck MSGQ QSYSOPR to see
which Userprofile has been DISABLED.')
```

or....use the SNDSMTPEMM command.



The message: CPF1393 – User profile &2 has been disabled.

Check the QSYSOPR:

```
Queue . . . . . : QSYSOPR          Program . . . . . : *DSPMSG
Library . . . . . : QSYS           Library . . . . . :
Severity . . . . . : 99            Delivery . . . . . : *HOLD
```

Type reply (if required), press Enter.

```
Journal receivers AUDRCV0523 and *N detached.
Service Agent is analyzing your system product activity log entries.
Journal receivers AUDRCV0524 and *N detached.
Journal receivers AUDRCV0525 and *N detached.
Journal receivers AUDRCV0526 and *N detached.
Writer 432799/QSPLJOB/QZNODT1 started.
Writer 432799/QSPLJOB/QZNODT1 ended normally.
Journal receivers AUDRCV0527 and *N detached.
Service Agent is analyzing your system product activity log entries.
Job message queue for 427659/QUSER/QZRCSRVS has been wrapped.
User profile RUDI has been disabled.
Subsystem QINTER varied off work station QPADEV0008 for user RUDI.
Error code 4 while synchronizing profile RUDI.
```



The message: CPF1393 – User profile &2 has been disabled.

Check the History Log to find the userprofile:

```
1 SELECT X.MESSAGE_ID, X.MESSAGE_TYPE, X.MESSAGE_TIMESTAMP, X.FROM_USER, X.FROM_JOB, X.FROM_PROGRAM,  
2 X.MESSAGE_TEXT, X.MESSAGE_SECOND_LEVEL_TEXT  
3 FROM TABLE (  
4 QSYS2.HISTORY_LOG_INFO(CURRENT_TIMESTAMP - 2 HOUR)  
5 ) X  
6 WHERE X.MESSAGE_ID = 'CPF1393';  
7
```

MESSAGE_ID	MESSAGE_TYPE	MESSAGE_TIMESTAMP	MESSAGE_TEXT	MESS
CPF1393	INFORMATIONAL	2020-11-09 16:56:16.633558	User profile RUDI has been disabled. &N C	

Done: 1 rows retrieved. 09/11/2020, 17:03:36



The message: CPF1393 – User profile &2 has been disabled.

The next step enabling the user:

```
File Edit Search View Connection Run Explain Monitor Tools Help
SELECT X.MESSAGE_ID, X.MESSAGE_TYPE, X.MESSAGE_TIMESTAMP, X.FROM_USER, X.FROM_JOB, X.FROM_PROGRAM,
X.MESSAGE_TEXT, X.MESSAGE_SECOND_LEVEL_TEXT
FROM TABLE (
  QSYS2.HISTORY_LOG_INFO(CURRENT_TIMESTAMP - 2 HOUR)
) X
WHERE X.MESSAGE_ID = 'CPF1393';
CL:CHGUSRPRF USRPRF(RUDI) STATUS(*ENABLED);
```



The message: CPF1393 – User profile &2 has been disabled.

Navigator for i => System => System Operator Messages

The screenshot shows the IBM i Management console interface. On the left is a navigation tree with categories like 'Target Systems and Groups', 'Favorites', 'System', 'Emulation', 'All Tasks', 'Monitors', 'Basic Operations', 'Work Management', 'Configuration and Service', 'Network', 'Guest Partition Administration', 'Security', 'Users and Groups', 'Database', 'Journal Management', 'Performance', and 'File Systems'. The 'System' category is expanded, and 'System Operator Messages' is selected. The main area displays a table with one row: 'Qsys' (From User), 'Information' (Type), and 'User profile RUDI has been disabled.' (Message). A 'Filter' dialog box is open, showing a search rule: 'Any Column contains CPF1393'. The dialog includes a 'Match' dropdown set to 'all rules', a 'Column' dropdown set to 'Any Column', a 'Condition' dropdown set to 'contains', and a 'Value' text box containing 'CPF1393'. Buttons for '+', 'Filter', 'Clear', and 'Cancel' are at the bottom of the dialog.

From User	Type	Message
Qsys	Information	User profile RUDI has been disabled.

Filter dialog details:

- Match: all rules
- Any Column contains CPF1393
- Column: Any Column
- Condition: contains
- Value: CPF1393



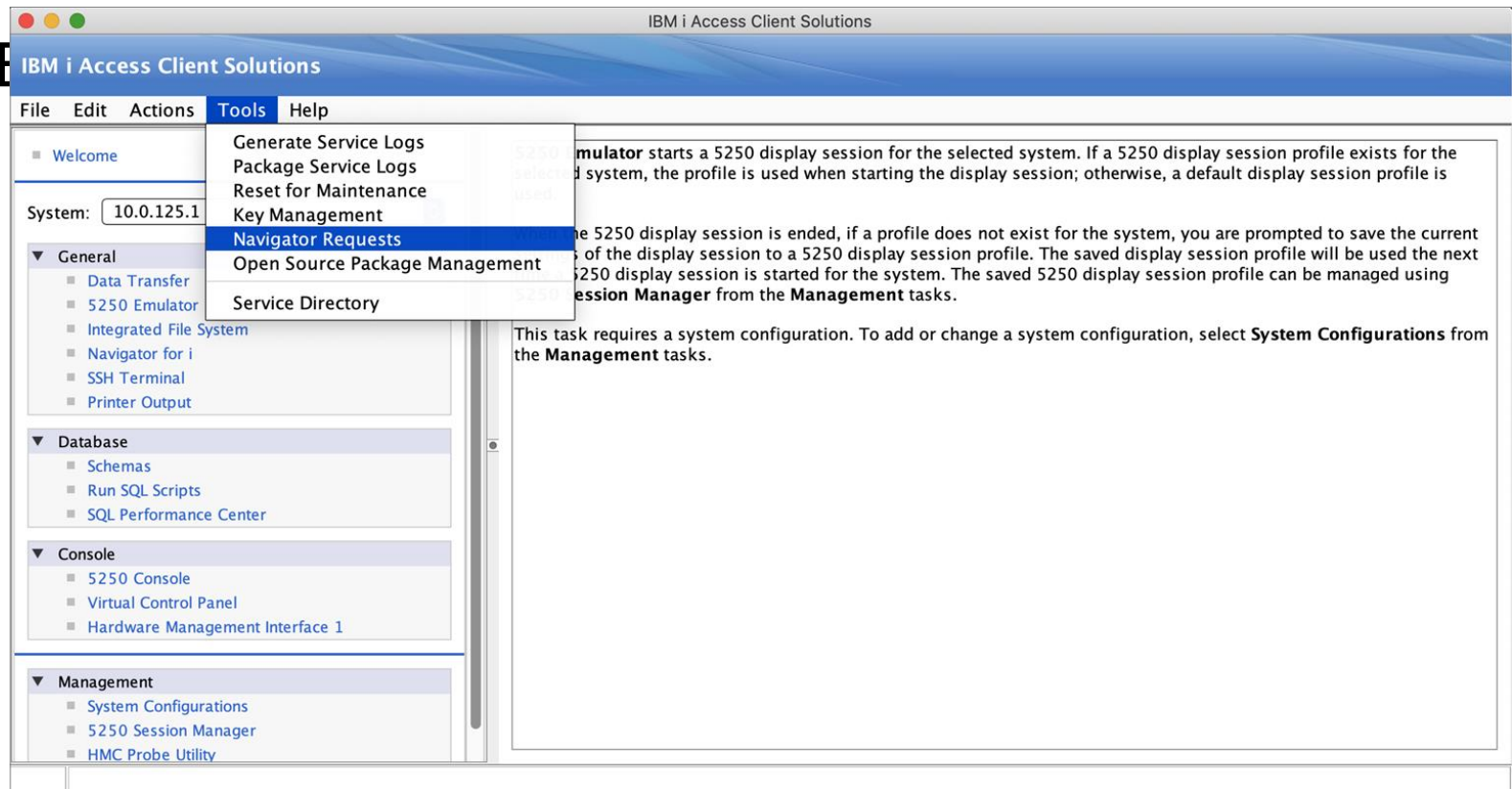
Using a direct link to QSYSOPR:

Use link below to view the message:

`http://<system_name_or_ip_address>:2004/ibm/console/xLaunch.
dopageID=com.ibm.i5OS.webnav.navigationElement.WebnavBase
Portlet&task=msg&msgq=Qsys/Qsysopr`

Using a direct link to QSYSOPR:

Use IBM





Using a direct link to QSYSOPR:

Use

The screenshot shows the IBM i Access Client Solutions application window. The title bar reads "IBM i Access Client Solutions". The menu bar includes "File", "Edit", "Actions", "Tools", and "Help". The main window has a left sidebar with a tree view containing categories like "General", "Database", "Console", and "Management". The "System" dropdown is set to "iclient1.vanhelvoirt.nl". A "Navigator Requests" dialog box is open in the foreground, titled "Navigator Requests". It contains a "Connection Information" section with a table:

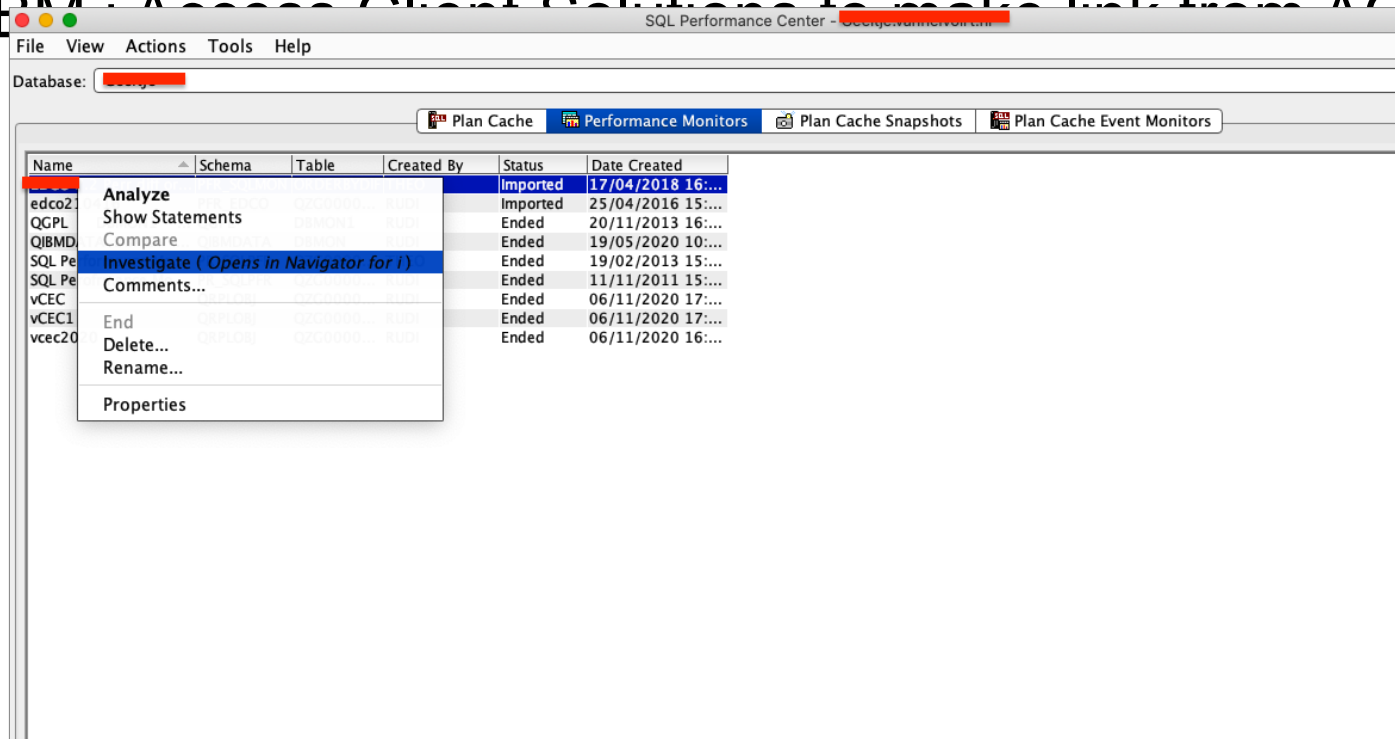
System	Status
iclient1.vanhelvo...	Listening for requests

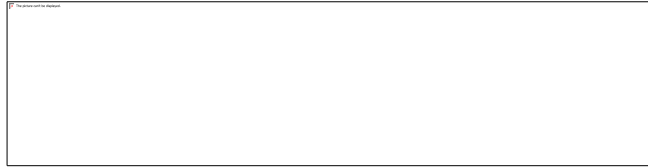
Below the table are "Start" and "Stop" buttons. To the right of the dialog box, there is partially visible text: "to save the current", "ll be used the next", "managed using", and "onfigurations from".



Using a direct link to QSYSOPR:

Use IBM Access Client Solutions to make link from ACS work:





The Future.....  am ready



Welcome x Message Monitors x

Properties

General
Message Queue
Message Set 1
Message Set 2
Actions

Message Set 1:

--- Select Action ---

Select	Message ID	Type	Severity	Reply With
<input type="checkbox"/>	cpf1393	Informational	>=70	

Page 1 of 1 | 1 | Go | Rows 1 | Total: 1 Selected: 0

Excluded Message Set 1:

Select	Message ID	Type	Severity	Reply With
None				

Page 1 of 1 | 1 | Go | Rows 0 | Total: 0 Selected: 0

No action
 Permanently remove monitored messages from message queue
 Set the message trigger and reset:

Trigger at the following message count: 1 1,2,3...100 messages

IBM i trigger command:

```
SNDDST TYPE(*LMSG)
TOINTNET((support@vanhelvoirt.nl)) DSTD('&MON')
LONGMSG('Please handle &MSGID on message queue
&TOMSGQ in &TOLIB.;/Pit was sent at &TIME on &DATE on
system::/N&ENDPOINT./PA Userprofile has been
DISABLED. Wait for the e-mail enabling the Userprofile
again with 15 minutes.')
```

Automatically reset after trigger command has run

IBM i reset command:

```
RUNSQL SQL('call sqlscripts.Enable_User') COMMIT(*NONE)
NAMING(*SQL)
```



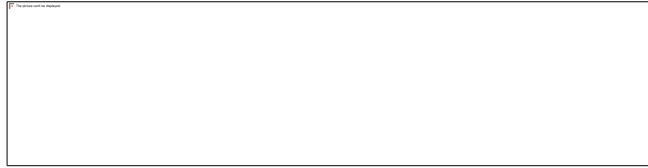
The IBM i trigger command:

```
SNDDST TYPE(*LMSG) TOINTNET((<email_address>))  
DSTD('&MON')  
LONGMSG('Please handle &MSGID on message queue &TOMSGQ in &TOLIB.:/PIt was ser
```

The IBM i reset command:

```
RUNSQL SQL('call sqlscripts.Enable_User') COMMIT(*NONE) NAMING(*SQL)
```

For Copy/Paste convenience 



Questions?



Thanks